



OUR LADY'S SCHOOL NEWSLETTER 4 March 2022

www.olsunshine.catholic.edu.au

Parish Priest: Fr. Peter-Damien McKinley

Principal: Ms. Patrizia Bertani

Parish Mass Times:

English: Saturday 5.30pm, Sunday 9:00am, 10:45am & 5:30pm

Vietnamese: Saturday 7.30pm, Sunday 12.30pm

Chin: Sunday 2.30pm

School Phone: 9312 2230

School website: www.olsunshine.catholic.edu.au

Our Lady's is a Child Safe School

'Come, follow me,' Jesus said, 'and I will send you to fish for people.' At once they left their nets and followed him. Matthew 4:19-20

DATES FOR THE DIARY

Mon 7 Mar School Photos

Mon 14 Mar Labour Day Public Holiday

Tues 15 Mar 2023 Foundation Enrolments open

Mon 28 Mar Whole School Mass in the Church at 9.00am

Wed 30 Mar 5.30-7.00pm Foundation Blessing & Picnic

Wed 30 Mar - Fri 1 Apr Year 6 Camp

Wed 6 Apr Last day of term 1 for students

Wed 6 April 7.00pm P&F AGM

Thurs 7 April: First Aid Training for Staff (Level 2, Anaphylaxis, CPR, Asthma). **No school for the children**

Friday 8 April: RE Professional Development with Fr Richard Leonard. **No school for the children**

Tues 26 Apr First day of Term 2

Thur 28 Apr Open Day for Foundation 2023

Wed 2 May 7.00pm PAB AGM

PLEASE TAKE NOTE OF THE 2022 SCHOOL CLOSURE DAYS

(students do not attend school):

Thurs 7 April: First Aid Training for Staff (Level 2, Anaphylaxis, CPR, Asthma)

Friday 8 April: RE Professional Development with Fr Richard Leonard

Wednesday 1 June: Literacy Focus Professional Development with Deb Sukarna

Thursday 23 June: Three Way Learning Conversations (students attend at their appointment time)

Monday 31 October: Report Writing

SACRAMENT DATES

Thurs Mar 10 7.00pm Reconciliation (Year 3)

Sun 22 May 10.30am Eucharist 4G

Sun 29 May 10.30am Eucharist 4H

Fri 29 July 7.00pm Confirmation (Year 6)

Dear Parents,

I have no doubt that you have been shocked at the war that has broken out in Ukraine. This week the teachers and students have been praying for the people of Ukraine and the people of Burma (Myanmar), praying for peace to be restored. Peace is one of the Our Lady's School gospel values and today as I'm writing to you is the World Day of Prayer. I hope you can join us at 2:30pm in the school yard today as we gather together for our first outdoor assembly.

Today's assembly will focus on praying for peace around the world but in particular in Burma (Myanmar) where many of our families have come from and still have relatives. Today the Our Lady's School community has collaborated together and donated money to support the people of Myanmar who are forced to flee their villages to escape the violence. Once again you have shown immense generosity and at this point I can say that we have raised a little over \$1800. This amount may increase before the end of the day but it is a tremendous effort.

A HUGE THANK YOU TO THE OUR LADY'S SCHOOL COMMUNITY FOR RAISING over \$1800

TO SUPPORT PEOPLE IN BURMA (MYANMAR) WHO ARE BEING DISPLACED BY WAR.

Your generosity will make a difference to the lives of many people and children.



Reconciliation Candidates 2022

Please pray for us



Ash Wednesday Prayer

Ash Wednesday is the first day of Lent. We should pray to start the season right. Jesus, Saviour and Redeemer, Wednesday was Ash Wednesday and the beginning of Lent.

We pray that we may walk with you in faith, hope and love through the weeks of Lent. Help us to grow in faith during this holy season and to be people of prayer always. May we be aware of the needs of others so that we can reach out to them in your name. turn our hearts and our footsteps toward your kingdom of peace and justice. We pray this through your Holy Spirit of love who shows us the way to the Father. Amen



OUR LADY'S SCHOOL - AN OUTWARD FACING LEARNING COMMUNITY

This week the school reconnected with the parent community by welcoming them back onto the school grounds and also with our local community and with our church as the students went to Our Lady's Church to celebrate Ash Wednesday. The Year 2 students went on a neighbourhood walk to investigate our rich and diverse local community and the Year 3 students went on an excursion to CERES Community Environment Park in Brunswick to experience and learn more about the culture of the Aboriginal people in the area. I would recommend all parents to visit the park with their children as it is a wonderful way to spend an afternoon.

On Thursday a Parent/Child Information night was held at school in preparation for the Year 3 students to receive the Sacrament of Reconciliation next Thursday at 7.00pm in Our Lady's Church. Thank you to all the parents who attended the evening and to Kriss Oliver (RE/Learning and Teaching Leader), the Year 3 teachers Karen Everson and Josh Howarth who organised the evening.

ASH WEDNESDAY

This Wednesday the Year 4, 5 and 6 students celebrated Ash Wednesday in the Our Lady's Church. The Years 1, 2 and 3 students held a Paraliturgie in their classrooms. Ash Wednesday marks the beginning of Lent. Lent is a period of preparation for Easter, which lasts for forty days. We remember how Jesus spent forty days in the desert praying and fasting. Lent is a time for us to come to know Jesus more closely. People often think of Lent as a time for giving things up, but perhaps this year we can think of Lent as a time to show Love and learn more about the Love Jesus Christ has for us and how we can live out the Our Lady's school Gospel Values below:



*With Faith and love we are people of:
Peace Service Respect Courage Compassion Justice*

I would like to say a big thank you to all the Year 4, 5 and 6 students who attended the Ash Wednesday Mass. Your behaviour was respectful and prayerful. Father Peter and many of the parishioners made many positive comments about how polite and well mannered the students were throughout the whole mass.

Parents and carers it is with great joy that Father Peter and I invite you all to our first School Mass for 2022. The mass will start at 9.00am on Monday the 28th of March in Our Lady's Church. I hope to see many of you there.

SCHOOL PHOTOS

A reminder that on Monday (7 March) we are having our 2022 School Photos. Please make sure your child comes to school in their Summer Uniform (please see pictures later in the Newsletter for what to wear and what not to wear) and make sure everyone has their best, brightest smile ready!



Yours sincerely,

Patrizia Bertani

Ms Patrizia Bertani
Principal

principal@olsunshine.catholic.edu.au

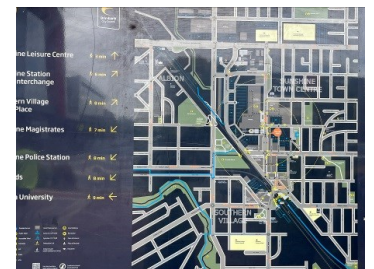
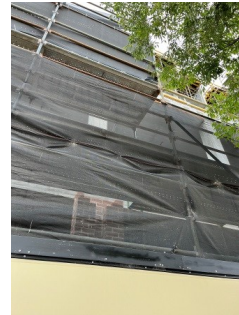


Li Li F 6A
Archie S 3F
Max H 6B
Cristian M 6A
Billie F FI
Bethany L 6B
Hanna L 3F
Kira N FI

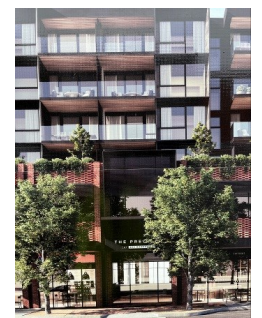


Year 3 at CERES





Year 2 out in the community



OUR LADY'S SCHOOL SUNSHINE

2023
FOUNDATION
ENROLMENTS ARE
OPEN FROM
MARCH 15 2022.

Please come into
the School Office
to pick up an
Enrolment Pack.

OPEN DAY

THURSDAY 28 APRIL

Tours at 9.30am, 2.15pm & 4.00pm

**OUR
VISION**

**Our Lady's School is a Catholic
Primary School for boys and girls,
serving the Parish of Our Lady of the
Immaculate Conception Sunshine.**

Principal Ms Patrizia Bertani
principal@olsunshine.catholic.edu.au

In a spirit of unity and harmony,
we strive to develop the whole
person; providing an excellent
education for all and inspiring
our community members to
live a Christian way of life.

FOR MORE INFO:



9312 2230



32 Station Place Sunshine
3020



www.olsunshine.catholic.edu.au



Our Lady of The Immaculate Conception Parish Primary School

SchoolPix is coming to photograph on:

Monday, 7 March 2022

ORDER ONLINE AT WWW.SCHOOLPIX.COM.AU

Early Bird orders with free delivery to your school close on
Wednesday, 9 March 2022.

A postage fee will apply for orders placed after this date.

Sibling orders must be placed prior to 8am on photo day.

Misplaced your order flyer? Please visit www.schoolpix.com.au and use the student search to find your child's order number or contact our Customer Service team on 1300 766 055.

Please note: Cash orders will not be accepted



YOU'VE MADE THE WISE CHOICE.

1300 766 055 • www.schoolpix.com.au • help@schoolpix.com.au



IMPORTANT REMINDER
Monday 7th of March
School Photo Day



Monday 7th March we ask you to make sure you wear the correct summer uniform as shown below. If your hair is shoulder length or longer it must be tied back. Make sure that if you put a ribbon in your hair it is either white, yellow or blue, the school colours.

Don't forget to also bring your best smile to school.

WHAT TO WEAR: ✓



WHAT NOT TO WEAR: ✗



No skivvies, runners, long pants, tunics or leggings under dresses



Collection Notice for parents/guardians

2022 Student Residential Address and Other Information

The Australian Government Department of Education, Skills and Employment (the department) would like to notify you that a request has been made for your child's school to provide residential address and other information as required under the *Australian Education Regulation 2013*.

The school is required to provide the department with the following information about each student at the school:

- Names and residential addresses of student's parent(s) and/or guardian(s)
- Student residential address (**excluding student names**)
- Whether the student is a primary or secondary student (education level)
- Whether the student is boarding or a day student (boarding status).

The school collects the above information by generating a **unique and unidentifiable** – student reference number (SRN) for each student record. The SRN is also **only** used by the school for this collection. **It is not allowed to be used for any other purpose.** The number only indicates to the department that each record provided is for one student.

Purpose of the collection

The Student Residential Address and Other Information Collection (the Collection) informs Australian Government school education policy and helps ensure funding for non-government schools is based on need basis.

The information collected will be used to inform school funding calculations. It is combined with data held by the Australian Bureau of Statistics (ABS) to calculate a non-government school community's anticipated capacity to contribute to the costs of schooling.

From 2020, a new measure of capacity to contribute, the Direct Measure of Income (DMI), was introduced. The DMI is based on the median income of parents or guardians of students at a non-government school using data collected through the Collection. More information about the DMI can be found on the [Quality Schools Package](#) page on the departmental website.

Use and disclosure of personal information

Your personal information is protected by law under the *Privacy Act 1988* (Cth) (Privacy Act). Personal information is information or an opinion about an identifiable individual. Personal information includes an individual's name and contact details.

Any use or disclosure of your personal information must occur in accordance with Privacy Act and the *Australian Education Act 2013* and *Australian Education Regulation 2013*.

Your personal information provided to the department through the Collection may be:

- disclosed to the ABS for the purposes of capacity to contribute calculations and analysis as a part of the Multi-Agency Data Integration Project (MADIP). Further information about MADIP can be found on the [MADIP page](#) on the ABS website.
- disclosed to a contracted auditor where the department may from time to time, carry out an audit of a school's submission to the Collection. The contracted auditor compares the school's submission with the student enrolment information held by the school and will not use the information for any other purpose.
- disclosed to its service providers for the purposes of the provision of information and communications technology support services to the department.
- used or disclosed where it is otherwise required or authorised by law.

The department does not intend to disclose your personal information to any overseas recipients.

The department's privacy policy can be found at www.dese.gov.au and includes information on:

- how individuals can access and seek correction of the personal information held by the department;
- how complaints about potential breaches or breaches of the Privacy Act can be made;
- how the department will deal with these complaints.

The department commissioned an independent privacy impact assessment (PIA). The PIA assesses the flows of information under the Collection, compliance with the Privacy Act and measures in place to safeguard the personal information being collected. The current version is available at <https://www.dese.gov.au/school-funding/resources/2018-student-residential-address-collection-additional-required-information-privacy-impact>

What do you need to do?

You are not required to do anything. Your school is responsible for providing the requested details to the department; however, you may wish to ensure that your school has the most up-to-date and correct details for your family.

Contacts for further information

Your school can provide additional information about the Collection process.

Alternatively, please visit the [SchoolsHUB Address Collection help and support page](#).

Parents & Friends Committee

At Our Lady's school we are committed to developing and sustaining reciprocal partnerships with our parent community in order to improve student engagement ,wellbeing, and learning. Joining the Parents and Friends Committee is a great way to contribute to strengthening your connection to this school. We are hoping that you will consider joining the Parents and Friends Committee. Over the years the Parents and Friends Committee and volunteers have raised money to purchase valuable resources for the school as well as providing additional rich experiences for the children of Our Lady's school to enjoy.

Our school values, encourages and appreciates parent involvement and children love to see their parents participating in the life of the school.

Parents and Friends Committee

Annual General Meeting 2022

**Wednesday 6 April (please note change of date) at
7.00pm in the Mary MacKillop Library**

It is a great way of connecting with other parents and you will be made to feel very welcome. We look forward to adding new members to our already great team.

Attached you will find the role descriptions and a nomination form. Joining the Parents and Friends Committee is a wonderful way to meet other parents, support the school via many exciting fund raising activities and to enrich the children's school experience by organising special treat days or the Sacramental parties for the children who received their Reconciliation, Eucharist or Confirmation.



ROLE DESCRIPTIONS OF THE PARENTS AND FRIENDS COMMITTEE

President

The President's position carries a task of trust and responsibility and requires skill and time. The President should exercise authority with tact, be impartial and open to other points of view.

The main role of the President is to:

- * Be the main representative/spokesperson for the P&F
- * Liaise with the Committee members and set the agenda for meetings
- * Be the main contact for agenda items
- * Open the meetings punctually and ensure the agenda is followed
- * Ensure those present at the meeting have the opportunity to discuss each item on the agenda prior to a decision being made
- * Make sure, particularly on contentious matters, as many points of view as possible are expressed
- * Make sure everyone is given an opportunity to speak and encourage members to speak by addressing questions to them
- * Work towards a collaborative approach with other members of school community
- * Be mindful of timelines, keep discussions on track and keep meetings moving
- * Make sure everyone is given an opportunity to speak and encourage members to speak by addressing questions to them
- * Work towards a collaborative approach with other members of school community
- * Be mindful of timelines, keep discussions on track and keep meetings moving
- * Make sure everyone is given an opportunity to speak and encourage members to speak by addressing questions to them
- * Work towards a collaborative approach with other members of school community
- * Be mindful of timelines, keep discussions on track and keep meetings moving

Vice-President

The Vice President plays an important role by assisting the President with P&F responsibilities and replacing the President and chair meetings in the absence of the President.

Secretary

The Secretary is very important to the efficient operation of the P&F. Duties and responsibilities include:

- * Taking minutes at P&F and Committee meetings
- * Photocopying and distributing minutes to Committee members along with agenda prior to the next meeting
- * In consultation with the Principal and President:
- * Providing a summary of the matters discussed at the meeting for display on the parents' notice board
- * Dealing with any incoming/outgoing correspondence

Treasurer

The Treasurer carries a task of trust and responsibility. Duties and responsibilities include:

- * Taking charge of monies of the P&F
- * Keeping accurate financial records of all receipts and expenditure
- * Banking all money regularly
- * Reporting regularly on the P&F's financial position at meetings
- * Preparing a financial report for the Annual General Meeting

Committee Members

Committee members have a responsibility to:

- * Attend PFA meetings as regularly as possible and send apologies if unable to attend
- * Help organise P&F activities and projects
- * Work towards the best possible outcomes being achieved
- * Be mindful that discussions should be on topics which are relevant to the whole school community
- * Facilitate and nurture positive home/school relationships within the parent community



Election of the Our Lady's School Parents and Friends Committee 2022

Nomination Form

P & F Annual General Meeting – Wednesday 6 April at 7.00pm

Nominations are invited for the Our Lady's School Parents & Friends Committee 2022.

Nomination

I, (your name) _____

Parent of (name and grade of your child) _____

Nominate: (name of person) _____

For the Position of: (one form per nomination)

☐

President

☐

Vice President

☐

Secretary

☐

Treasurer

Signed

Nominator: _____

Date: _____

Nomination Acceptance

I, (nominee) _____

Parent of (name and grade of your child) _____

Accept the nomination as indicated above.

Nominee's Signature: _____ Date: _____

ALL NOMINATION FORMS ARE TO BE HANDED INTO THE OFFICE



EXTEND OUTSIDE SCHOOL HOURS CARE

BOOK 14 DAYS IN ADVANCE TO SAVE MONEY!

Extend offers fun programs that develop and nurture young minds including science, cooking, sports and imaginative play.

Book now for the remainder of Term 1 to secure your place!

Bookings for our Extend Squad Holiday Program will soon be open! Keep an eye out for an email from us in coming days to find out what fun activities are on offer each day so you can secure the days you need for school holidays.

Visit extend.com.au to enrol your child or book your sessions!



Enquiries 1300 366 437

Book online today

extend.com.au

OUR LADY'S SCHOOL PARENTS ADVISORY BOARD (PAB)

Membership

Open to all parents/carers – representing families

Principal (representing Parish Priest and School Community – children, families and staff)

School Leaders as required

Community members as invited e.g. Family-School Partnership convenor

Child Safety

It is an expectation that all Members of the Parent's Advisory Board (PAB) adhere to the Our Lady's School Child Safety Policy and Standards and understand that Our Lady's is a Child Safe School that promotes the safety, wellbeing and inclusion of all children.

Structure

Chairperson

Deputy Chairperson

Secretary

Currently the Parents and Friends Committee meets and reports regularly to the Principal who will pass on relevant information to the Parents Advisory Board

Vision for Parent Advisory Board

- To represent and to be representative of all parents and families, being inclusive and committed
- To share and live out the vision and the values of the school
- To be a rich source of wisdom and insight as well as working to strengthen community partnerships
- To consult and seek to achieve better outcomes for all members of the school community
- To be role models for others – maintaining a professional and confidential approach
- To make everyone feel included and welcome
- To be active listeners committed to working collaboratively
- To work proactively and positively for the school
- To represent the parent voice and the whole school community in a loyal and proper way
- To establish boundaries and protocols to operate by
- To at all times maintain confidentiality

Current protocols/agreements include:

Maintain a positive and proper tone for all our communication – in meetings and in representing the school. Speak for the needs of all children and not our personal concerns (individual matters are to be discussed with the school leaders and teachers).

Agenda is set by the Chairperson in consultation with the Principal. All parents attending are welcome to add items to the agenda. New agenda items are tabled and then placed on the agenda of the next meeting. Meetings start at 7.00pm and end at 8.00pm.

The chairperson communicates matters to the school community via Parent Advisory Board Newsletter article. Please email to: jhill@olsunshine.catholic.edu.au

The principal follows up matters with the staff and the whole community.

The secretary records and distributes the notes of the meeting to all attendees and apologies.

Proposed agenda items must be emailed to the Chairperson / Deputy Chairperson / Secretary 1 week before the scheduled Board Meeting.

Role Descriptions

Chairperson

The Chairperson's position carries a task of trust and responsibility and requires skill and time. The Chairperson should exercise authority with tact, be impartial and open to other points of view.

The main role of the Chairperson is to:

- Be the main representative/spokesperson for the Parents Advisory Board
- Liaise with the Principal to finalise agenda items for the next meeting and advise the Secretary to distribute the agenda and required pre-reading at least 3 business days before the next meeting
- Be the main contact for agenda items
- Open the meetings punctually and ensure the agenda is followed
- Ensure those present at the meeting have the opportunity to discuss each item on the agenda prior to a decision being made
- Work towards a collaborative approach with other members of school community
- Be mindful of timelines, keep discussions on track and keep meetings moving

Deputy Chairperson

The responsibilities of this role will be to:

- Support the Chairperson in the coordination of the meetings (i.e. pre-reading / pre-work, etc.).
- Support the Chairperson in the running of the meeting by ensuring timelines are adhered to, and discussions are on track.
- Assume the responsibilities of the Chairperson or the Secretary in the event either one is unable to attend the meeting.

Secretary

The Secretary is very important to the efficient operation of the Parents Advisory Board.

Duties and responsibilities include:

- Taking minutes at Parents Advisory Board meetings
- Photocopying and distributing minutes to Committee members along with agenda prior to the next meeting
- Dealing with any incoming/outgoing correspondence

Committee Members

Committee members have a responsibility to:

- Attend Parents Advisory Board meetings as regularly as possible and send apologies if unable to attend
- Help organise Parents Advisory Board activities and projects
- Work towards the best possible outcomes being achieved
- Be mindful that discussions should be on topics which are relevant to the whole school community
- Facilitate and nurture positive home/school relationships within the parent community



Parents Advisory Board

Expression of Interest Form

Expressions of Interest are invited for the Our Lady's School Parents Advisory Board 2022.

I, (your name) _____

Parent of (name and grade of your eldest child):

Contact number: _____

Contact email: _____

Am interested in becoming a member of the Our Lady's School Parents Advisory Board in 2022.

Signed: _____

Date: _____

ALL EXPRESSIONS OF INTEREST FORMS ARE TO BE HANDED TO THE PRINCIPAL

FINANCIAL ASSISTANCE INFORMATION FOR PARENTS

Every Victorian child should have access to the world of learning opportunities that exist beyond the classroom. The Camps, Sports and Excursions Fund helps ensure that no student will miss out on the opportunity to join their classmates for important, educational and fun activities. It is part of making Victoria the Education State and the Government's commitment to breaking the link between a student's background and their outcomes.

CAMPS, SPORTS & EXCURSIONS FUND (CSEF)

School camps provide children with inspiring experiences in the great outdoors. Excursions encourage a deeper understanding of how the world works while sports teach teamwork, discipline and leadership. All are a part of a healthy curriculum.

CSEF is provided by the Victorian Government to assist eligible families to cover the costs of school trips, camps and sporting activities.

If you hold a valid means-tested concession card or are a temporary foster parent, you may be eligible for CSEF. A special consideration category also exists for asylum seeker and refugee families. The allowance is paid to the school to use towards expenses relating to camps, excursions or sporting activities for the benefit of your child.

The annual CSEF amount per student is:

- \$125 for primary school students
- \$225 for secondary school students

MORE INFORMATION

For more information about CSEF visit:

<https://www.education.vic.gov.au/about/programs/Pages/csef.aspx>

HOW TO APPLY

Applicants should fill in the attached CSEF application form or download from the website below.

Please bring completed form and Health Care Card to the Office so we can make a copy.



CAMPS, SPORTS AND EXCURSIONS FUND (CSEF) APPLICATION FORM

Our Lady's Primary School Sunshine

School Name

21101

School REF ID

Parent/carer details

Surname _____

First name _____

Address _____

Town/suburb _____ State _____ Postcode _____

Contact number _____

Centrelink pensioner concession **OR** Health care card number (CRN)

- - - **OR**

☐ Foster parent under a temporary care order* **OR** ☐ Veterans affairs pensioner (Gold Card)**

*Foster Parents must provide a copy of the temporary care order letter from the Department of Families, Fairness and Housing (DFFH).

**Applicants must provide a copy of the Veteran Affairs Gold card

Is this an application for special consideration (no CRN needed)? Yes ☐ No ☐

Student details

Student's surname	Student's first name	Student ID	Date of birth (dd/mm/yyyy)	Year level

I authorise the Department of Education and Training (DET) to use Centrelink Confirmation eServices to perform an enquiry of my Centrelink customer details and concession card status in order to enable the business to determine if I qualify for a concession, rebate or service. I also authorise the Australian Government Department of Families, Fairness and Housing (DFFH) to provide the results of that enquiry to DET.

I understand that:

- DFFH will use information I have provided to DET to confirm my eligibility for the Camps, Sports and Excursions Fund and will disclose to DET personal information including my name, address, payment and concession card type and status.
- this consent, once signed, remains valid while my child is enrolled at a registered Victorian school unless I withdraw it by contacting the school.
- I can obtain proof of my circumstances/details from DFFH and provide it to DET so that my eligibility for the Camps, Sports and Excursions Fund can be determined.
- if I withdraw my consent or do not alternatively provide proof of my circumstances/details, I may not be eligible for the Camps, Sports and Excursions Fund provided by DET.
- Information regarding my eligibility for the Camps, Sports and Excursions Fund may be disclosed to the DFFH and /or State Schools Relief for the purpose of evaluating concession card services or confirming eligibility for assistance.

You are able to request access to the personal information that we hold about you, and to request that any errors be corrected, by contacting your child's school.

Signature of applicant _____ Date ____/____/____

CSEF ELIGIBILITY

Below are the criteria used to determine a student's eligibility for the Camps, Sports and Excursions Fund (CSEF).

Criteria 1 – General eligibility

To be eligible for the fund, a parent or carer of a student attending a registered Government or non-government Victorian primary or secondary school must:

- on the first day of Term one
 - on the first day of Term two
- a) be a holder of one or more of the eligible financially-means tested cards **OR** be a temporary foster parent, and;
- b) submit an application to the school by the due date.

For the list of eligible financially-means tested cards refer to the CSEF Policy:

<https://www2.education.vic.gov.au/pal/camps-sports-and-excursions-fund/policy>

Parents who receive a Carer Allowance on behalf of a child, or any other benefit or allowance not income tested by Centrelink, are not eligible for the CSEF unless they also comply with the above.

Criteria 2 - Be of school age and attend school in Victoria

For the purposes of CSEF, students may be eligible for assistance if they attend a Victorian registered primary or secondary school. CSEF is not payable to students attending pre-school, kindergarten, home schooled, or TAFE.

Special Consideration

A special consideration category exists for

- Families on a bridging visa, temporary protection visa, in community detention or are asylum seeker families
- Students in temporary out of home care arrangements, including statutory kinship care

For more information, see <https://www2.education.vic.gov.au/pal/camps-sports-and-excursions-fund/guidance/eligibility>

Eligibility Date

For concession card holders CSEF eligibility will be subject to the parent/carers concession card being validated successfully with Centrelink on the first day of either term one (31 January 2022) or term two (26 April 2022).

PAYMENT AMOUNTS

CSEF payment amount

The CSEF is an annual payment to the school to be used towards camps, sports and/or excursion expenses for the benefit of the eligible student.

- Primary school student rate: \$125 per year.
- Secondary school student rate: \$225 per year.

The CSEF is paid directly to your child's school and will be allocated by the school towards camps, sports and/or excursion costs for your child.

For ungraded students, the rate payable is determined by the student's date of birth. For more information, see:

www.education.vic.gov.au/about/programs/Pages/csef.aspx

Year 7 government school students who are CSEF recipients are also eligible for a uniform voucher. Secondary schools are required to make applications on behalf of parents/carers so please register your interest at the school.

HOW TO COMPLETE THE APPLICATION FORM

NOTE: ALL SECTIONS MUST BE COMPLETED BY PARENT/LEGAL GUARDIAN

1. Complete the PARENT/CARER DETAILS section.

Make sure that the Surname, First Name, and Customer Reference Number (CRN) details match those on your concession card. You will also need to provide your concession card to the school.

If you are claiming as a temporary Foster Parent or a Veteran Affairs Pensioner, you will need to provide a copy of documentation confirming your status as a temporary Foster Parent or provide your Veterans Affairs Pensioner Gold card to the school.

If you are seeking special consideration, mark this in the form and provide a copy of the relevant documentation.

2. Complete the STUDENT/S DETAILS section for students at this school.
3. Sign and date the form and return it to the school office as soon as possible. The CSEF program for 2022 closes on the 24 June 2022.

PLAY FOOTBALL



**YOUR LOCAL FOOTBALL CLUB
MELBOURNE KNIGHTS ARE
RECRUITING BOYS & GIRLS TO
JOIN OUR FOOTBALL PROGRAM.
CONTACT US NOW**

juniors@melbourneknights.com.au

Dobson Reserve, Maidstone

insights



Peer time counts big time towards your child's success

by Michael Grose

"It takes a village to raise a child because in a village there are always enough kids to form a play group." Anon

Life for children and teenagers is generally very busy and adult-initiated. A quick glance at most kids' after school schedules will reveal at least two after school activities (involving sport/ physical activity or classes of some sort) each week that are organised and lead by an adult. Nothing wrong with that however the more time children spend in adult-initiated activities the less free time they have to spend among themselves, and the enormous benefits this brings.

Spending free time with peers benefits kids in these ways:

1. They learn to negotiate and communicate

Young children generally communicate with one another through play, and the communications have real meaning. They negotiate about what and how to play. Typically kids will make up the rules of any game, modifying them as they go along, and challenging other children's interpretations. *"You're not playing by the rules"* is a common childhood retort most of us are familiar with. Left to their own devices kids will generally resolve such conflict situations more creatively, and with more finality than when adults become involved.

Teenage peer-to-peer communications often focus on emotions and the struggles they experience. Adolescents learn they can be honest with their friends, as they are less likely to overreact and assume control, the way that their parents or other adults might.

2. They become independent quicker

When children spend more time among themselves they become less reliant on adults to solve problems for them. In fact, when kids play among themselves someone will take on the authority of an adult and ensure that problems are resolved, usually more quickly and more equitably than when an adults attempts to do so.

Typically when kids of any age get together they act in ways that can mock and challenge adulthood – young children will use 'naughty' words and teenagers push parent boundaries so they can gather together away from adults. This type of independence-seeking is the default mechanism of kids of all ages, but it can be stifled by well-meaning, over-involved or over-controlling adults.

3. They are less anxious

"I dare you" is a phrase that evokes strong memories for many adults. It's a throw-back to a time when as children or teenagers we challenged each other to climb that tree, to cross that road and to go speak to that girl/boy. Of course, the biggest challenge we faced was to confront our fears rather than avoid them. Children of any

generation tend to be more courageous, and better able to learn to manage difficult emotions such as fear, nervousness and anxiousness when they spend more time with each other, away from adults.

4. They become more innovative

Adults of every generation bemoan the fact that children and teens don't play in the same way as they did when they were young. We forget that children are naturally drawn to the newest innovations in the larger culture around them. Where adults are naturally suspicious of change, children will invariably embrace it. This is shown by children's eagerness to embrace digital technology, which is often far ahead of their parents and teachers. Children's culture focuses, quite naturally and adaptively, on the skills important to the world they are growing into, not the world as it was, when their parents and teachers were growing up.

5. They get along better with others

The biggest requirement for kids mixing with siblings and peers is that they must get along with each other. They need to accept each other's differences; learn how to assert themselves while accommodating the needs of others and respect other kids' opinions, not just their own. This type of socialisation is central to being a member of civil society. The skills of "getting along" are best practised among equals and for kids that means practising on their peers and siblings. These "getting along" skills may well be the most important skills for kids to develop if they are to lead a successful adult life –including maintaining long-term partnerships, making friends and enjoying cooperative relationships in the workplace.

Encourage a culture of childhood

As a parent or teacher it helps to see the time kids spend among friends and siblings as valuable rather than wasted time. Encourage kids to spend time with each other and resist the urge to rush in fix things up between peers and siblings when relationships sour or they have problems to resolve. And resist the natural urge of most parents who lead small families to know everything that's happening in a child's life -kids need some time and space to work things out themselves.



Kids need to belong to two cultures

Encouraging a culture of childhood doesn't mean that we devalue what we offer as adults to children and young people. Kids also need to be able to fit into the adult culture that we are preparing them for. However it's important to recognise the value of sibling and peer relationships in the development of the skills and attitudes needed for a successful adult life.



Michael Grose

Michael Grose, founder of Parenting Ideas, is one of Australia's leading parenting educators. He's the author of 10 books for parents including Thriving! and the best-selling Why First Borns Rule the World and Last Borns Want to Change It, and his latest release Spoonfed Generation: How to raise independent children.



The Holy Spirit led Jesus into the desert

1st Sunday of Lent, Year C

Gospel

Luke 4:1-13

Filled with the Holy Spirit, Jesus left the Jordan and was led by the Spirit through the wilderness, being tempted there by the devil for forty days. During that time he ate nothing and at the end he was hungry. Then the devil said to him, 'If you are the Son of God, tell this stone to turn into a loaf.' But Jesus replied, 'Scripture says: Man does not live on bread alone.'

Then leading him to a height, the devil showed him in a moment of time all the kingdoms of the world and said to him, 'I will give you all this power and the glory of these kingdoms, for it has been committed to me and I give it to anyone I choose. Worship me, then, and it shall all be

yours.' But Jesus answered him, 'Scripture says:

You must worship the Lord your God,
and serve him alone.'

Then he led him to Jerusalem and made him stand on the parapet of the Temple. 'If you are the Son of God', he said to him 'throw yourself down from here, for scripture says:

He will put his angels in charge of you
to guard you,

and again:

They will hold you up on their hands
in case you hurt your foot against a stone.'

But Jesus answered him, 'It has been said:

You must not put the Lord your God to the test.'

Having exhausted all these ways of tempting him, the devil left him, to return at the appointed time.

During the season of Lent, we prepare for Holy week and Easter by focusing on our faith and love for God. Write down some ways you can do this.

Read a passage from Luke's Gospel every night before I go to bed.

When Jesus went into the desert, he chose the ordinary path of human life and resisted the temptation to use his miraculous powers to make life easier for himself. Draw a picture of yourself performing a selfless act that would make life easier for someone else.